



**PH 5101 •**  
**Three Bedrooms**

Enclosed Area : 1476 sq.ft. | Outdoor Area : 213 sq.ft.

**Total Area : 1689 sq.ft.**

**Interior features**

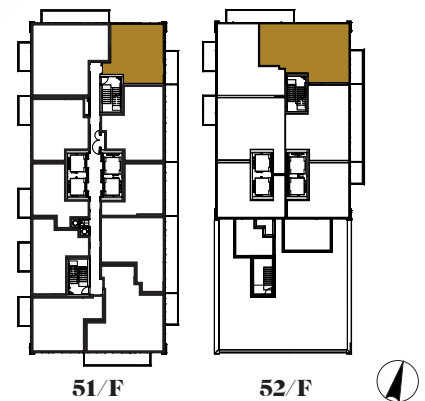
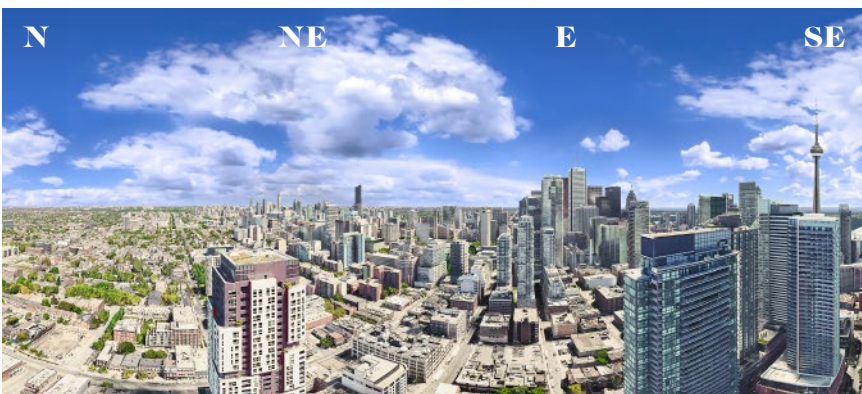
- ① Miele Appliances
- ② Kitchen Storage Organizer
- ③ Blum Kitchen Hardware
- ④ Miele Washer/Dryer
- ⑤ Kohler/Grohe Bathroom Plumbing Fixtures
- ⑥ Closet Organizer System
- ⑦ Roller - Shades

**Exterior features**

- ⑧ Radiant Ceiling Heaters
- ⑨ Composite Wood Decking



**Upper Floor**





**Lower Floor**

**PH 5102 •**  
**Three Bedrooms + Den**

Enclosed Area : 1490 sq.ft. | Outdoor Area : 334 sq.ft.

**Total Area : 1824 sq.ft.**

**Interior features**

- ① Miele Appliances
- ② Kitchen Storage Organizer
- ③ Blum Kitchen Hardware
- ④ Miele Washer/Dryer
- ⑤ Kohler/Grohe Bathroom Plumbing Fixtures
- ⑥ Closet Organizer System
- ⑦ Roller - Shades

**Exterior features**

- ⑧ Radiant Ceiling Heaters
- ⑨ Composite Wood Decking





**Upper Floor**

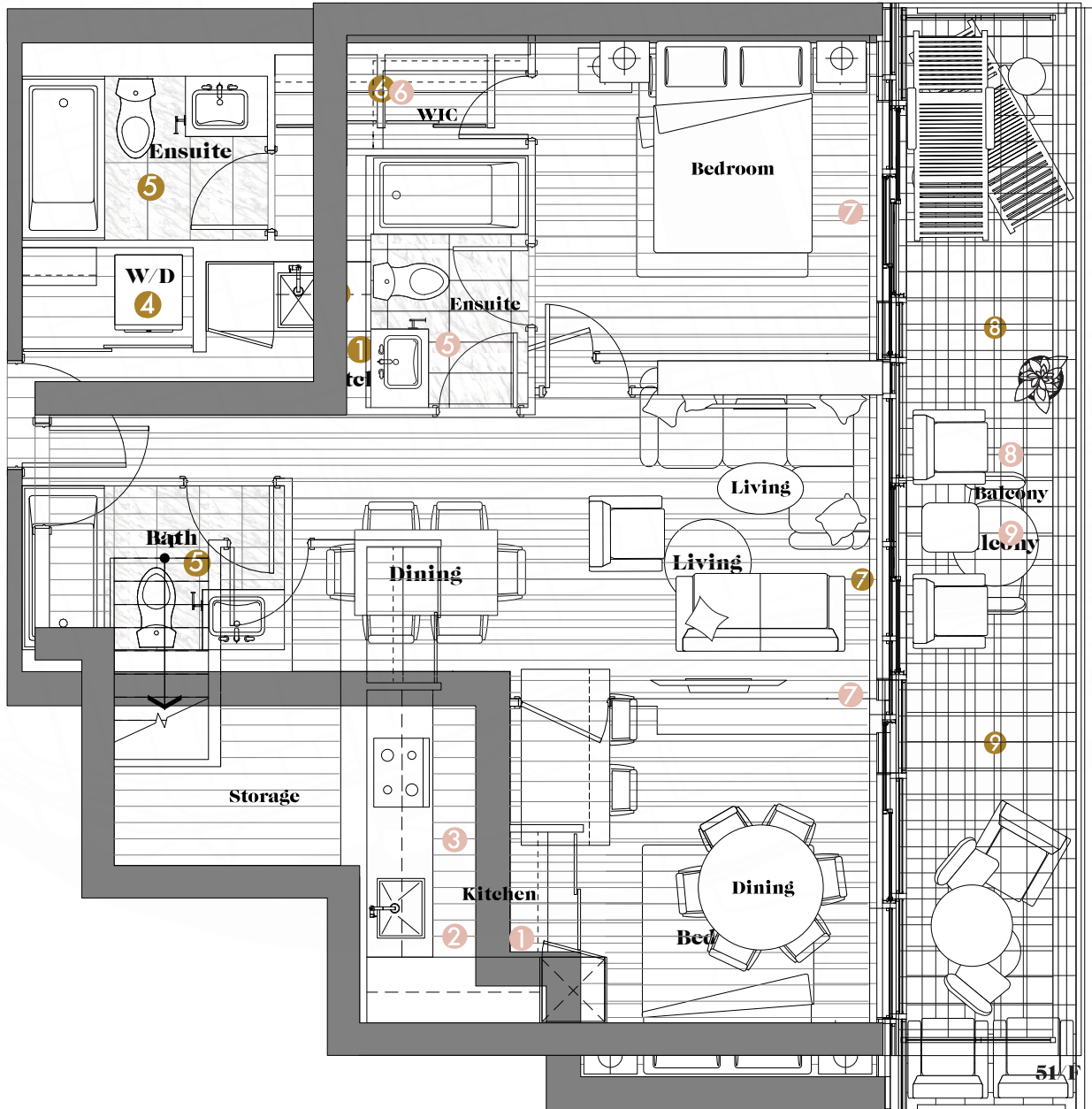


51/F

52/F







### PH 5105 • Two Bedrooms

**Enclosed Area :** 698 sq.ft.     **Outdoor Area :** 167 sq.ft.

**Total Area : 865 sq.ft.**

#### Interior features

- ① Miele Appliances
- ② Kitchen Storage Organizer
- ③ Blum Kitchen Hardware
- ④ Miele Washer/Dryer
- ⑤ Kohler/Grohe Bathroom Plumbing Fixtures
- ⑥ Closet Organizer System
- ⑦ Roller - Shades

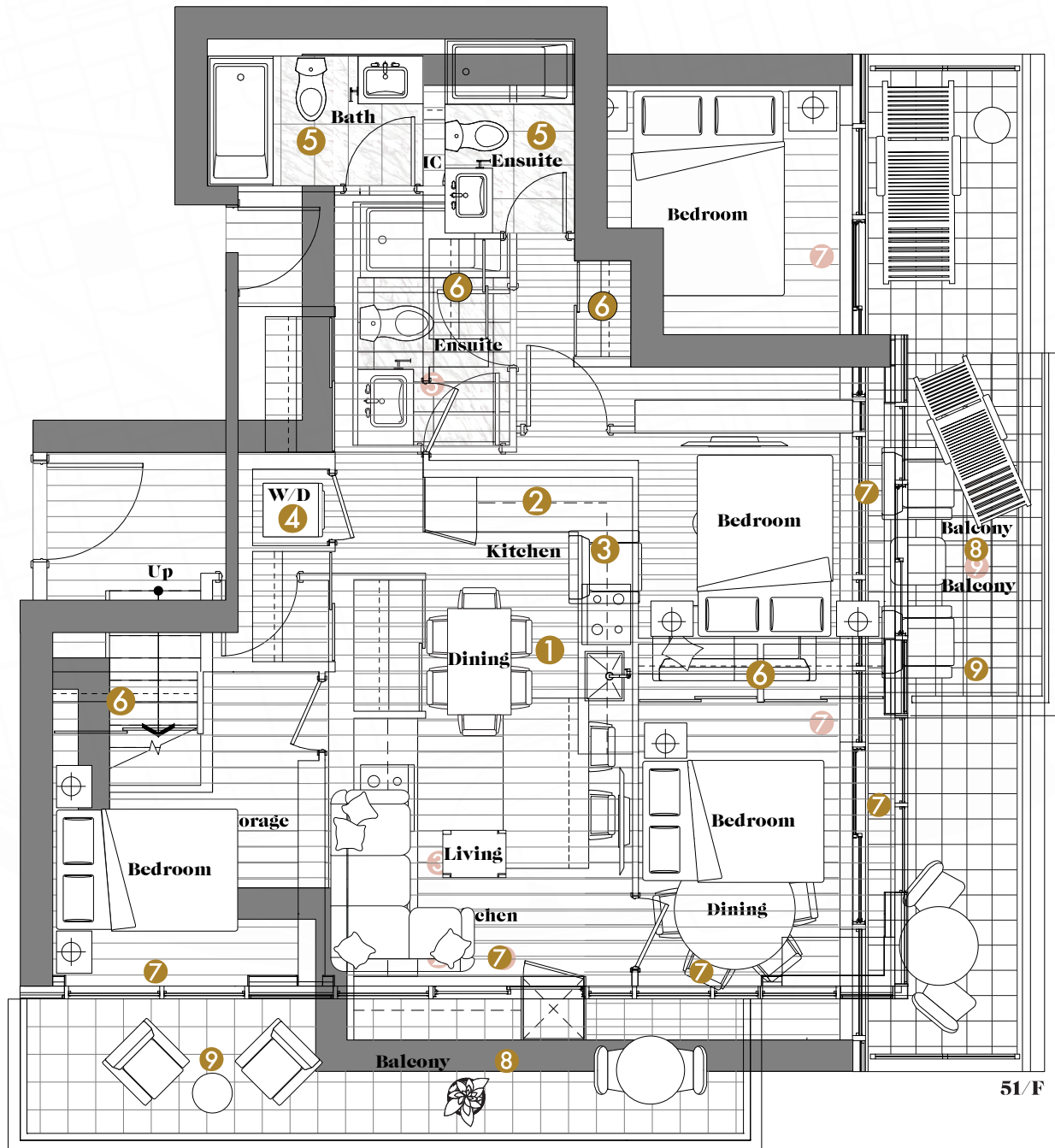
#### Exterior features

- ⑧ Radiant Ceiling Heaters
- ⑨ Composite Wood Decking



51/F

52/F



### PH 5106 • Three Bedrooms

**Enclosed Area :** 935 sq.ft.  
**Outdoor Area :** 203 sq.ft.

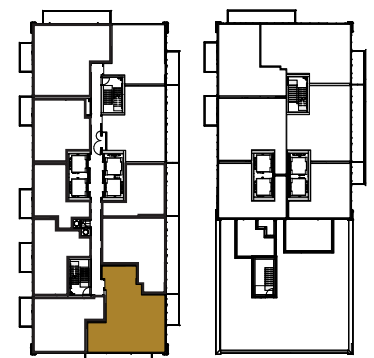
**Total Area : 1138 sq.ft.**

#### Interior features

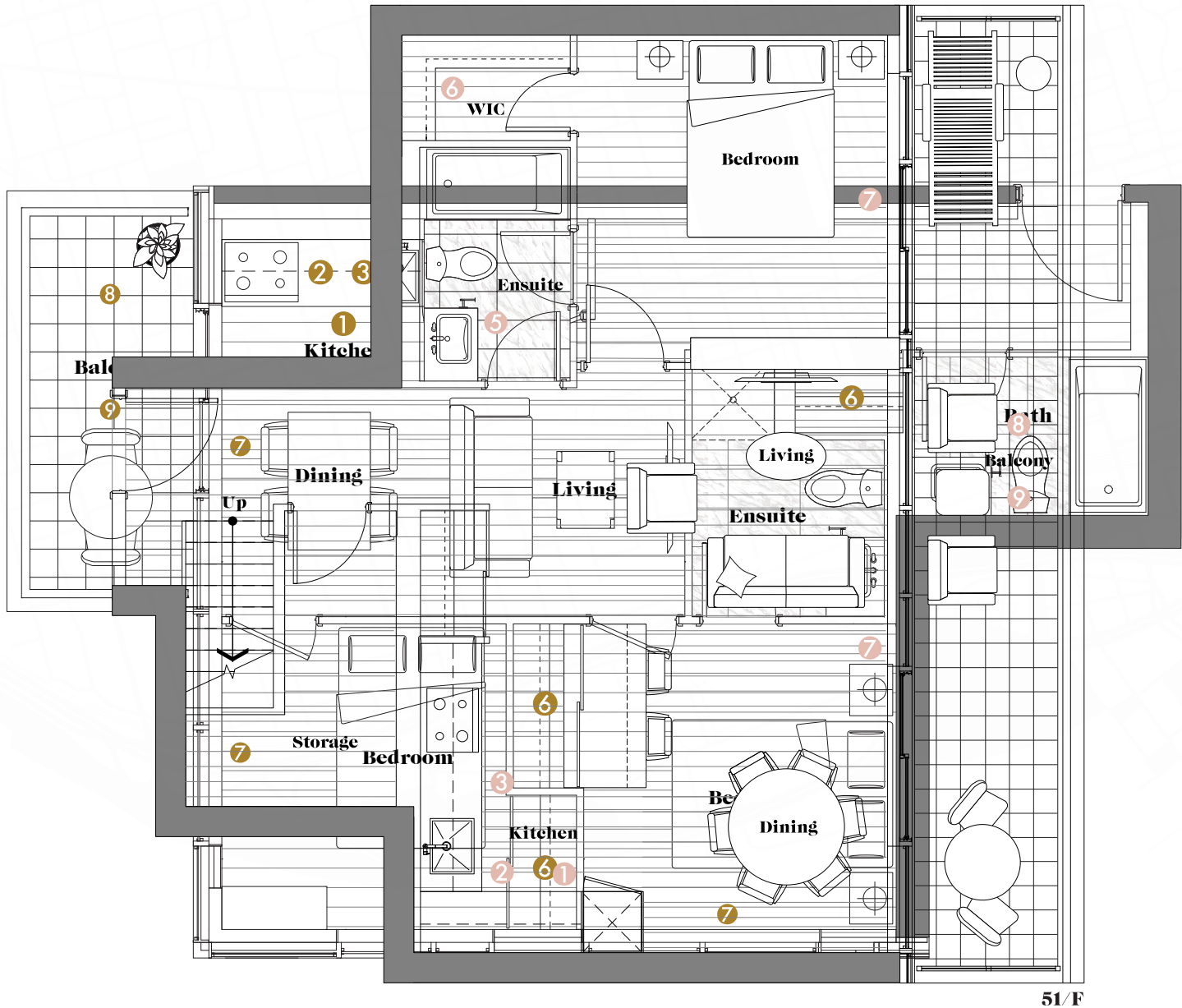
- ① Miele Appliances
- ② Kitchen Storage Organizer
- ③ Blum Kitchen Hardware
- ④ Miele Washer/Dryer
- ⑤ Kohler/Grohe Bathroom Plumbing Fixtures
- ⑥ Closet Organizer System
- ⑦ Roller - Shades

#### Exterior features

- ⑧ Radiant Ceiling Heaters
- ⑨ Composite Wood Decking







51/F

## PH 5107 • Two Bedrooms

Enclosed Area : 638 sq.ft.    Outdoor Area : 60 sq.ft.

**Total Area : 698 sq.ft.**

### Interior features

- ① Miele Appliances
- ② Kitchen Storage Organizer
- ③ Blum Kitchen Hardware
- ④ Miele Washer/Dryer
- ⑤ Kohler/Grohe Bathroom Plumbing Fixtures
- ⑥ Closet Organizer System
- ⑦ Roller - Shades

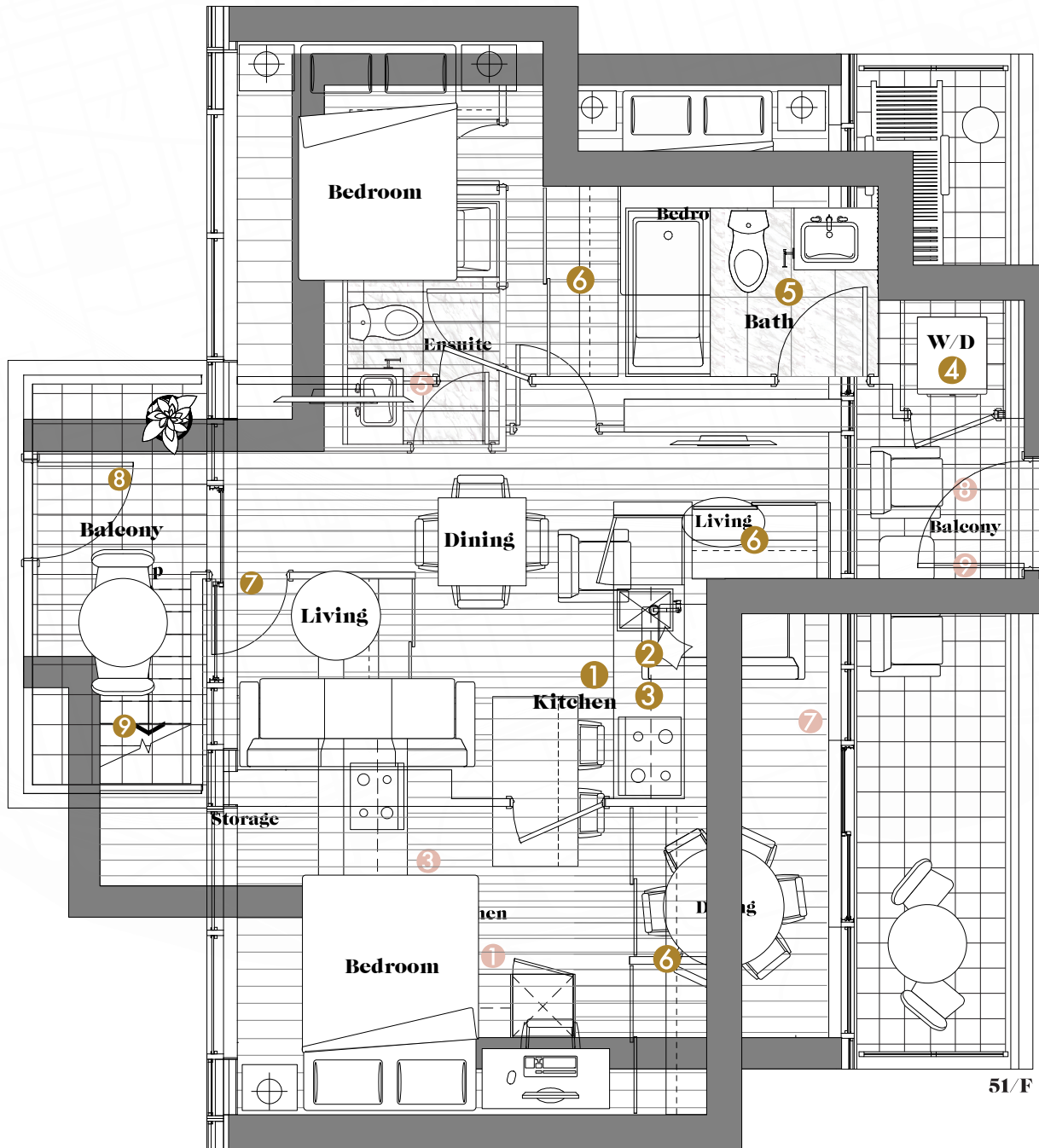
### Exterior features

- ⑧ Radiant Ceiling Heaters
- ⑨ Composite Wood Decking



51/F

52/F



**PH 5108 •**  
**Two Bedrooms**

**Enclosed Area :** 603 sq.ft. | **Outdoor Area :** 60 sq.ft.

**Total Area : 663 sq.ft.**

**Interior features**

- ① Miele Appliances
- ② Kitchen Storage Organizer
- ③ Blum Kitchen Hardware
- ④ Miele Washer/Dryer
- ⑤ Kohler/Grohe Bathroom Plumbing Fixtures
- ⑥ Closet Organizer System
- ⑦ Roller - Shades

**Exterior features**

- ⑧ Radiant Ceiling Heaters
- ⑨ Composite Wood Decking



Image is simulating the view between 50/F - 55/F. Actual views may be noticeably different than what is depicted in photographs and renderings. Any view from a suite may in the future be limited or eliminated by future developments. No guarantees that existing or future views of the condominium will be provided or, if provided, will be as depicted or described herein. The developer reserves the right to make modifications, substitutions, change brands, sizes, colours, materials, ceiling heights, and make minor revisions to interior wall locations and exterior window system. All materials and drawings are approximate. Specifications are subject to change without notice. Actual square footage may vary from the stated floorplan. Furniture shown on plans are for illustration purposes only and are not included. E. & O. E.





**Lower Floor**

## PH 5109 • Two Bedrooms

Enclosed Area : 1031 sq.ft. | Outdoor Area : 277 sq.ft.

Total Area : 1308 sq.ft.

### Interior features

- ① Miele Appliances
- ② Kitchen Storage Organizer
- ③ Blum Kitchen Hardware
- ④ Miele Washer/Dryer
- ⑤ Kohler/Grohe Bathroom Plumbing Fixtures
- ⑥ Closet Organizer System
- ⑦ Roller - Shades

### Exterior features

- ⑧ Radiant Ceiling Heaters
- ⑨ Composite Wood Decking







**Lower Floor**

## PH 5110 • Two Bedrooms + Den

Enclosed Area : 1360 sq.ft. | Outdoor Area : 120 sq.ft.

Total Area : 1480 sq.ft.

### Interior features

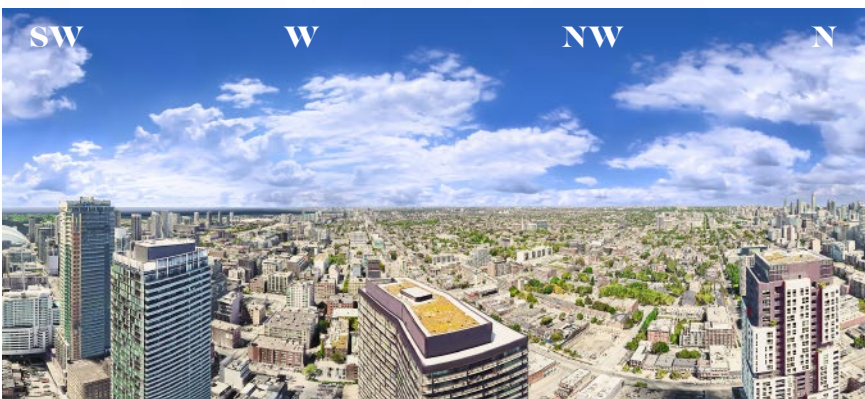
- ① Miele Appliances
- ② Kitchen Storage Organizer
- ③ Blum Kitchen Hardware
- ④ Miele Washer/Dryer
- ⑤ Kohler/Grohe Bathroom Plumbing Fixtures
- ⑥ Closet Organizer System
- ⑦ Roller - Shades

### Exterior features

- ⑧ Radiant Ceiling Heaters
- ⑨ Composite Wood Decking



**Upper Floor**





# Why PreCon



*Calltoddsmith.ca*  
I'll Be Your  
RE-Location Advocate

Todd Smith, REALTOR®  
Civil Engineering Technologist  
ABR | SRS | CNE | SRES | SRS | RENE



**RE/MAX**  
HALLMARK REALTY LTD.  
416.731.8956



**RE/MAX**  
PROFESSIONALS-SJ  
506.927.0070



**RE/MAX**  
NOVA  
902.989.2567

Uniquely licensed salesperson with all three independently owned & operated brokerages above. For more information email: [todd@calltoddsmith.ca](mailto:todd@calltoddsmith.ca)

[todd@calltoddsmith.ca](mailto:todd@calltoddsmith.ca)